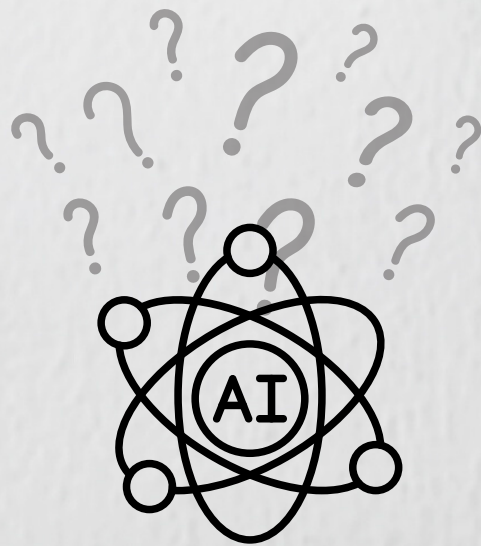


NSYSU

# Guidelines for the Use of Generative Artificial Intelligence (AI) Tools



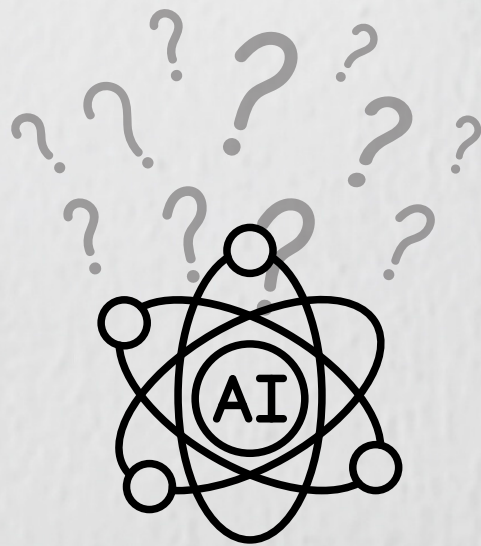


## WHAT ARE GENERATIVE AI TOOLS?

---

Generative AI tools refer to software or systems developed using artificial intelligence (AI) technology. These tools are capable of automatically generating content such as text, images, music, and more. They typically leverage substantial amounts of training data and pre-established models to produce new content that possesses logical structure and semantics.





## WHAT ARE GENERATIVE AI TOOLS?

---

However, it's crucial to understand that these tools lack genuine consciousness and comprehension. Consequently, their generated responses may occasionally be inaccurate or unsuitable.

Therefore, it's vital to thoroughly verify the information provided by such AI-generated content and exercise discretion when utilizing it.

# FOR STUDENTS

## DOS



Generative AI tools can be used for the following purposes:

1. Concept Clarification
2. Text Polishing
3. Translation and Foreign Language Learning
4. Critical Thinking Enhancement
5. Inspiration Generation
6. Paper Suggestions during Literature Review
7. Source Code Optimization

When using generative AI tools, adherence to Academic Ethics is paramount:

1. Proper Citation
2. Critical Thinking



## DON'TS



Students should refrain from using generative AI tools to:

1. Plagiarize or engage in ghostwriting
2. Cheat during examinations
3. Violate an individual's privacy

The following uses of generative AI tools are considered violations of Academic Ethics:

1. Inaccurate citation
2. Excessive reliance on AI tools



# FOR TEACHERS

**DOS**



Generative AI tools can be applied for the following purposes:

1. Providing prompt guidance

2. Explaining concepts

3. Simulating dialogues

4. Seeking grading suggestions

5. Establishing guidelines:

(1) Define the rules for using generative AI in the course

(2) Emphasize academic ethics when utilizing generative AI

6. Offering alternatives for students who have concerns

about using personal contact information (e.g., email)

when interacting with AI. For example, teachers can use AI

themselves and share the generated content with students.



# FOR TEACHERS

## DON'TS



When utilizing AI in teaching, teachers should avoid the following behaviors:

1. Ignoring the importance of individual guidance
2. Failing to verify and filter the information
3. Overlooking the need for multicultural understanding
4. Over-relying on AI tools
5. Grading assignments and exams using AI tools without personal involvement or review
6. Neglecting students' privacy and academic ethics:
  - (1) Inputting students' private information into generative AI systems.
  - (2) Solely relying on AI tools to handle cases related to academic ethics.

